

MAJOR WORLD MAKING ASSIGNMENT

Individual contribution

Denis Schörnig - 22092945 I

PANF-3854 Virtual World building

By Mary Bunch



ARTIST STATEMENT

In our world, an AI controls the weather based on environmental needs. The AI excels in calculating optimal weather conditions to foster the most efficient and sustainable growth of plants and fruits, eliminating extreme weather occurrences. To facilitate communication with citizens, the AI employs a small helper robot, designed to be endearing and alleviate any apprehension about the AI's presence. It's crucial to note that the AI makes calculations and weather-related decisions without delving into ethical considerations.

This concept aligns with a quote that resonated with me, particularly in the context of farmers relinquishing control to allow the AI to optimise cereal growth. "Radical imagination is simply Euroamericans deciding to leave the old visions of conquest and privileges of empire behind and focusing on their responsibilities as human beings today." (Taiaiake, 4) This quote introduces a new paradigm, reflecting what's occurring with the AI. With the AI managing food-related concerns, citizens can focus more on nurturing children and fostering better lives, reducing physical labor and stress associated with food provision.

The second quote I chose emphasises the need for contemplation about integrating AI into our daily lives due to its significant simplification potential: "Rather than having a strict delineation between Primary and secondary worlds, we have something of a spectrum connecting them, just as 'fiction' and 'nonfiction' are not as mutually exclusive as they may first appear." (Wolf, 2012)

I've developed an augmented reality application that showcases weather transformations. Through this app, you can interact with a small robot to inquire about specific weather conditions and their impact on landscapes. Simply input a landscape description and a weather scenario into the text field. As you do so, the robot will project a screen exhibit an AI-generated image of that landscape, powered by Dall-E. The intention behind this project was to bridge the connection between technology and our current capabilities. Interestingly, you retain control over this AI interface as you define the desired weather scenario.

Word count: 257 without quotes

ROLE STATEMENT

In our group project, we kicked off with a lively brainstorming session where everyone shared ideas and had a friendly debate to blend them together. Each of us picked a key topic for the project - I was drawn to exploring AI controlled weather and its overlap with 8th Wall. I dove into extensive research on, robotics, and tools like Chat GPT and DALL-E. I was looking for a cute robot design and modelled the robot in Maya on my own. After that I imported the robot and the screen in 8th wall. Working together, we built a cohesive world that merged these elements, creating a strong interconnected experience.

Word count: 107 without quotes



Start screen - see robot and the projection screen

Landscape corn field sunny

DALL·E ☐ ChatGPT



"field"

fields

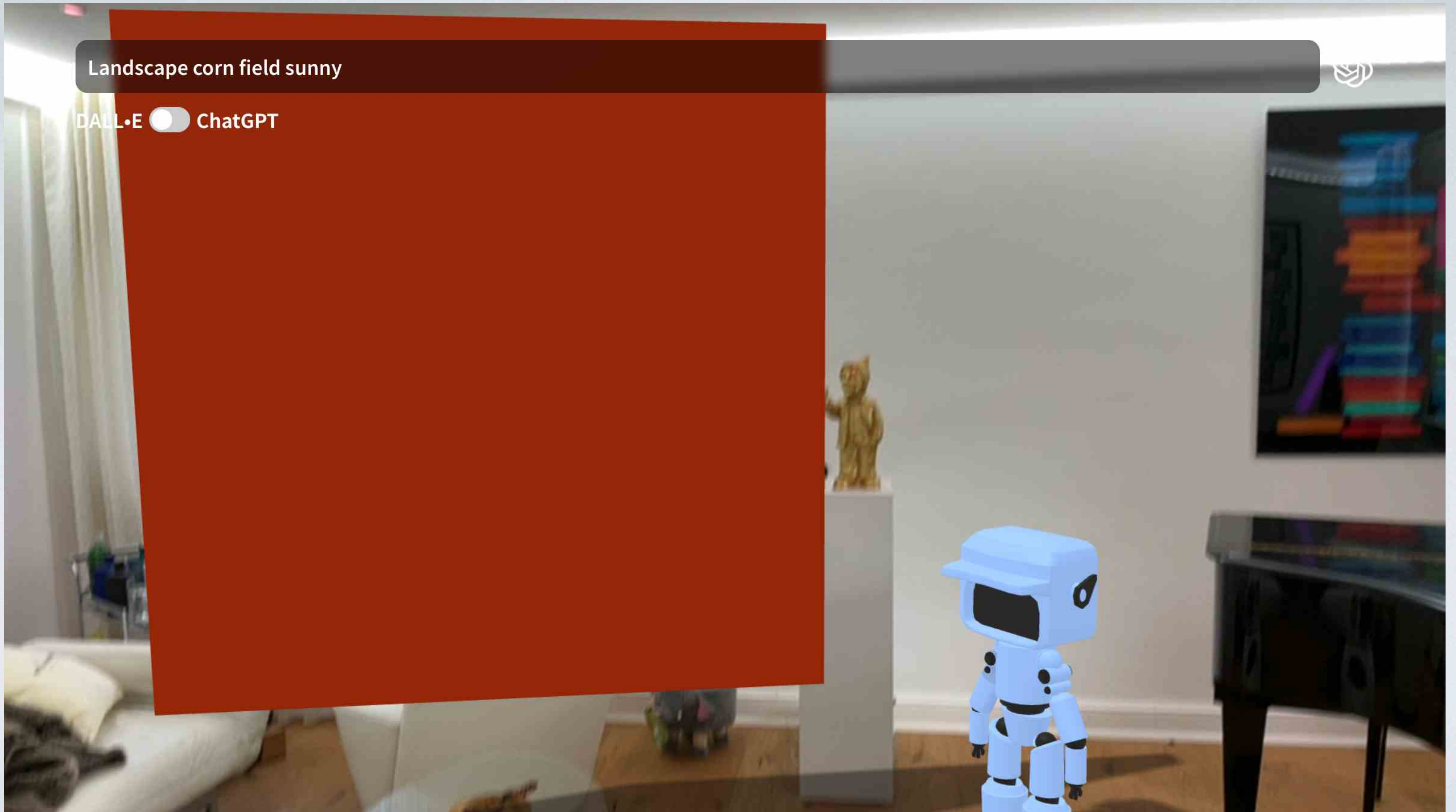
fieldwork



Type your landscape and weather scenario

Landscape corn field sunny

DALL·E ☐ ChatGPT



Wait for the image to appear on the red projection box

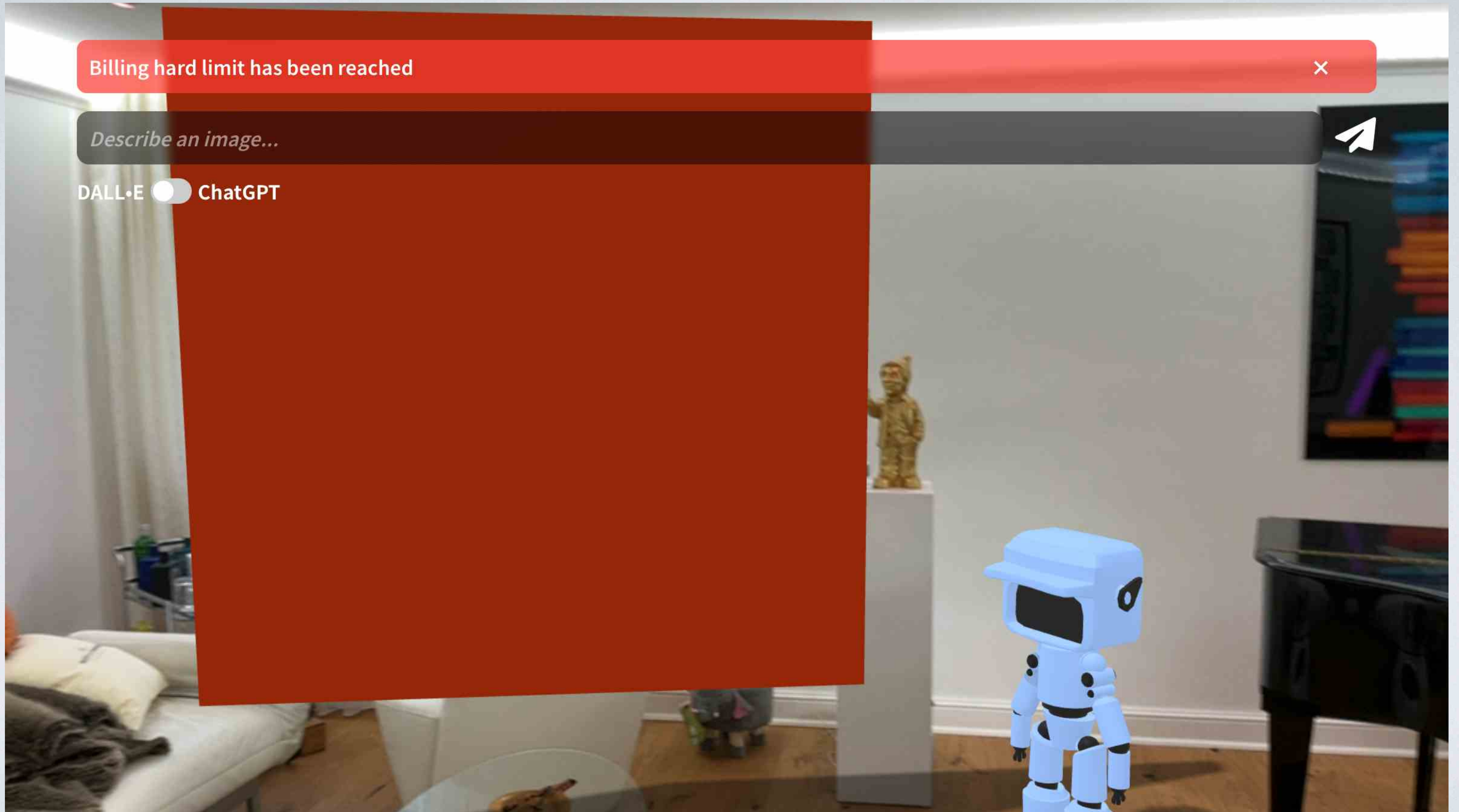
Billing hard limit has been reached



Describe an image...



DALL·E ☐ ChatGPT



Currently not working, because my free account has no credits anymore.

TECHNICAL STATEMENT

Currently the image creation is not working, because I just had a free account and I was using all my credits when I was testing and developing the AR Web app. I was not aware that my credits are limited. Now I am on the waiting list for the plus version of chatGPT and DALL-E.

I can say that in my tests of the image creation worked very well and I really like the connection from 8th wall and AI.

On the next slide you can see the image created by DALL-E which should appear on the red cube as a texture.



Image created by DALL-E 3. Prompt: landscape corn field sunny

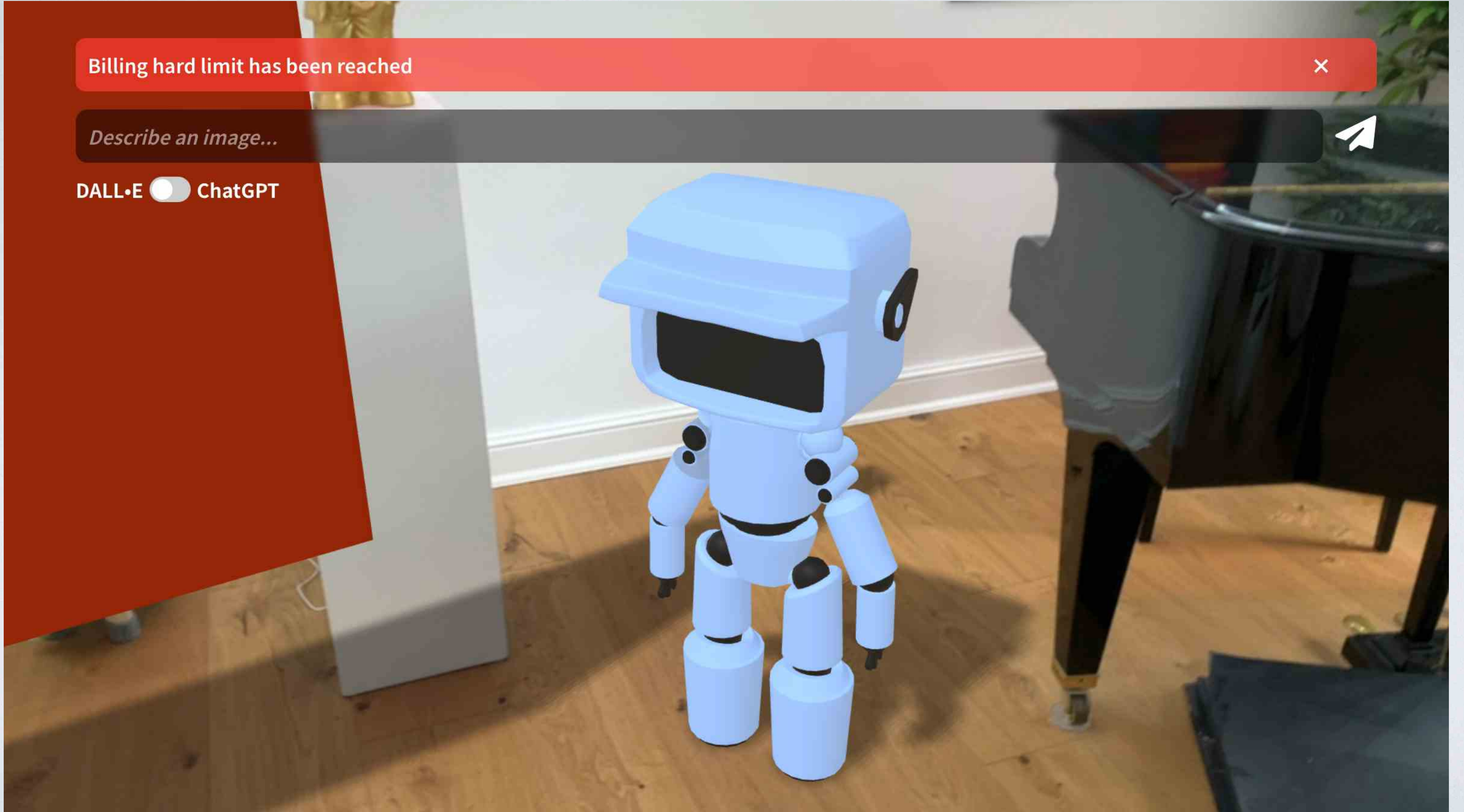
Billing hard limit has been reached



Describe an image...



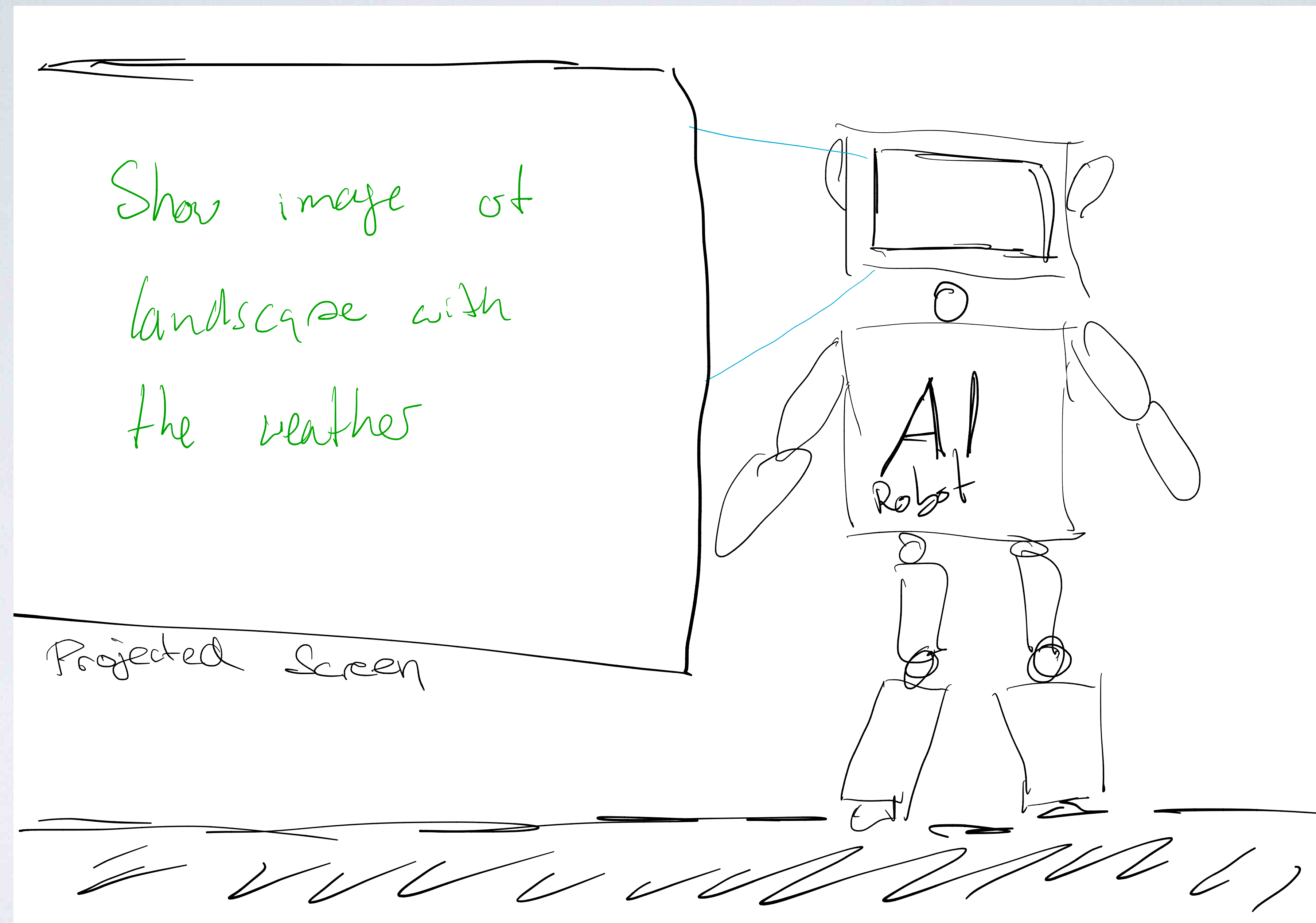
DALL·E ☐ ChatGPT



Close-up from the helper robot

CONCEPT / IDEAS / PROCESS

- AI is controlling the weather, because it can calculate it better than humans - more calculation power - ethics not relevant - just find most efficient and sustainable solution
- Robot is the cute helper of the AI to talk to the community
- Robot can help you with the most questions which are about knowledge but are not about ethical questions
- Main task of the robot is to be a companion for the citizens



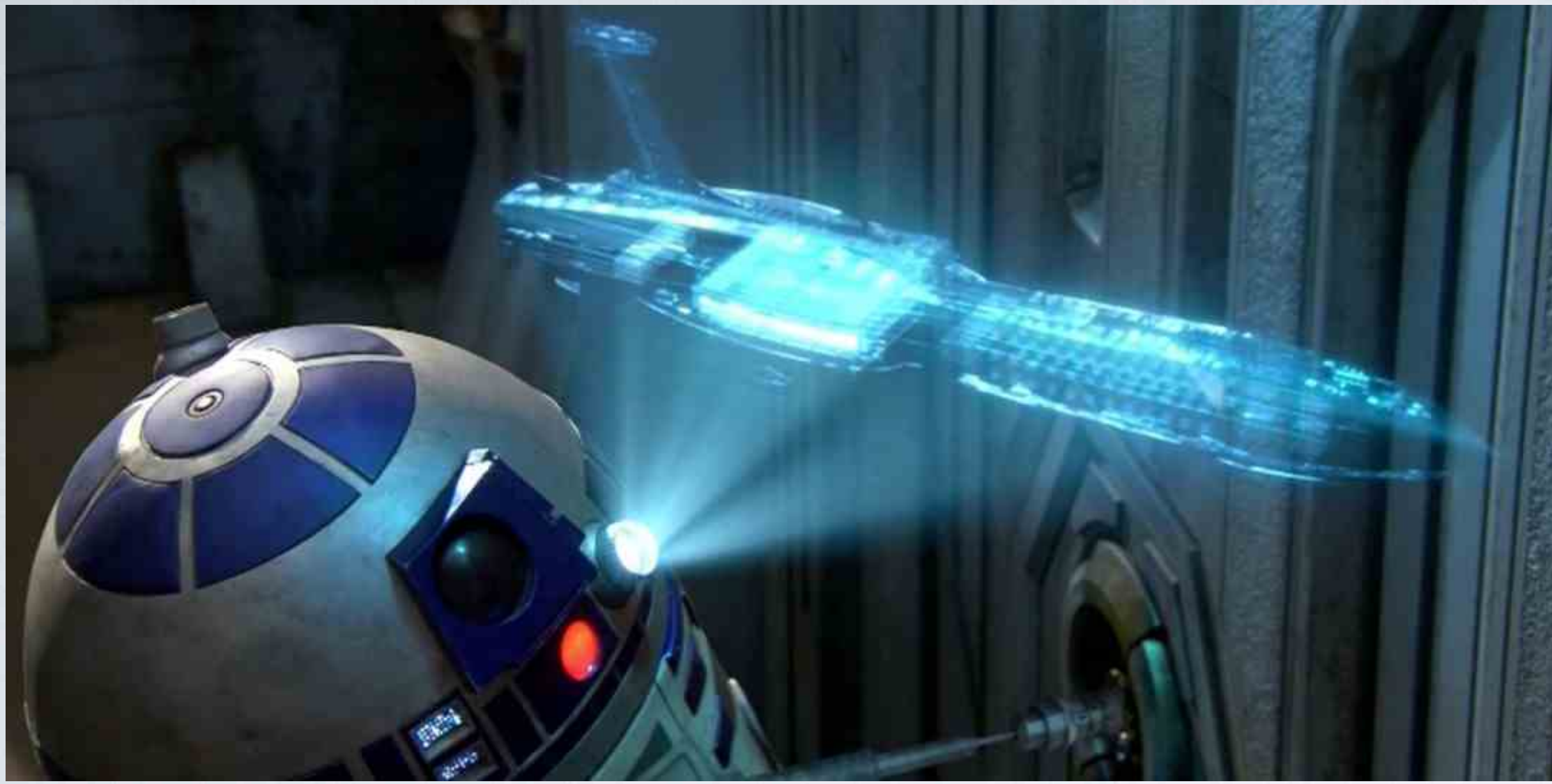
Basic sketch of the AR scene



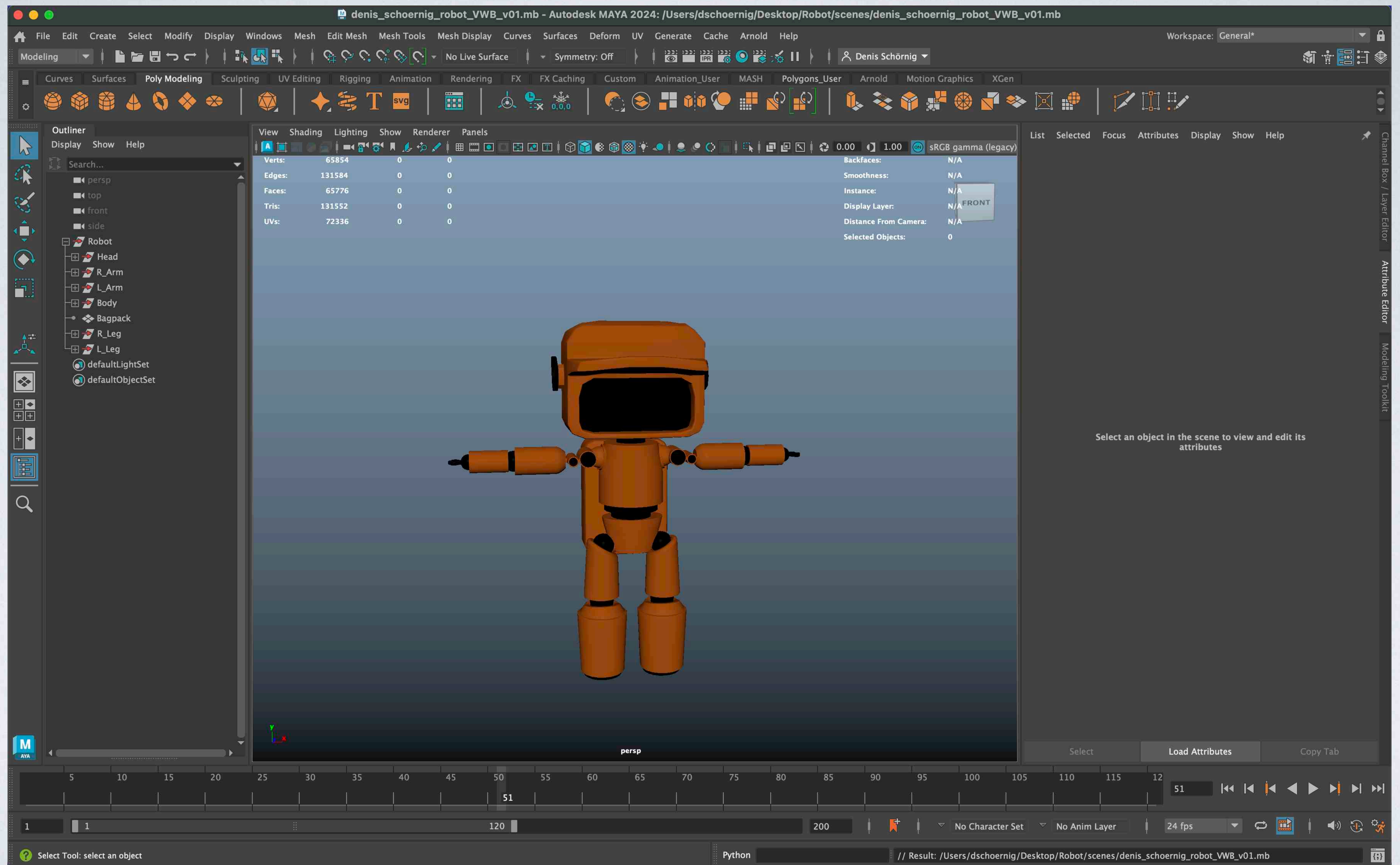
Robot reference



Robot reference



Screen projection reference



Maya WIP Screenshot of the model with another color