

INDIVIDUAL WORK FOR GROUP AUGMENTED REALITY WORLD

Denis Schörnig - 220929451

PANF-3854 Virtual Worldbuilding

By Mary Bunch

AR QR CODE FROM 8TH WALL



8th.io/37d cg

Visit URL

8th.io/37d cg
on a phone or
tablet



1. Open Camera
2. Scan Code

OR



AR View



ARTIST STATEMENT

I initiated this project with the concept in mind that we inhabit Earth, and due to various scenarios, such as earthquakes, tsunamis, and asteroid impacts, the world has become divided into three distinct cultures and communities. There are those who reside in the water, those on the islands adjacent to the water, and an upper class living on floating islands.

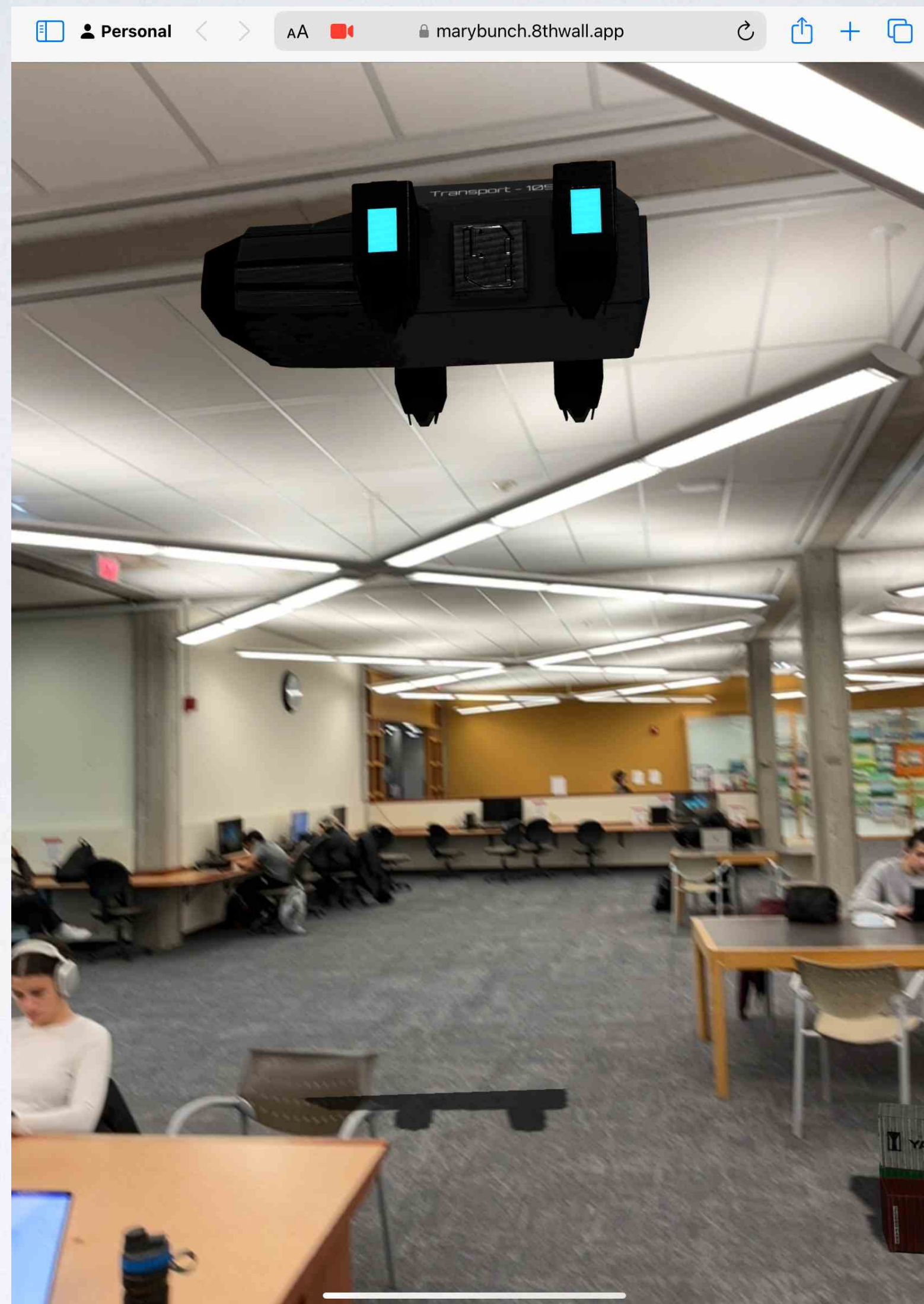
Using an augmented reality application, users find themselves on Earth, where one community is responsible for producing and manufacturing goods and products for the upper class. The changing weather conditions, triggered by asteroid impacts, have made inter-island travel challenging. Fortunately, aliens have lent their technological assistance, offering spaceships and weather-steady transport boxes. In the application, you can witness a closed spaceship transporting these boxes to the upper island. The community living in the water, just became one with the nature and animals and is not in contact with the other communities.

Initially, my concept involved heading outdoors and pointing a phone towards the sky, making use of the 8th Wall Sky Effect. However, during development, I encountered difficulties related to the necessity of being outdoors during daytime to check the app, which added stress to the development process.

In the end, I opted to use models and animate them within a small diorama to illustrate how goods are transported throughout this world. It becomes evident that the upper class only utilizes the Earth islands for the delivery of food and products, seemingly indifferent to the conditions of the producing community.



Spaceship is collecting the goods



Spaceship flies to upper island



Spaceship unload goods

FIRST CONCEPT

- User is standing on earth islands
- Spaceship is taking goods from the farms to the upper islands
- Spaceship is looks like cyberpunk, because of alien technology
- User can see changing weather conditions in the sky when he is looking down to earth - no stable weather situation
- Using 8th wall Sky effect (changing weather) and world effect (spaceship)

PROBLEM WITH THE FIRST CONCEPT

- Sky effect was very hard to implement and understand in 8th wall
- Took over 8h to test and understand just 8th wall sky effects
- Sky effect can just be tested at daytime and you have to go outside
- Conclusion - not worth it to spend more time on it

CONCEPT - SPACESHIP MODEL



Idea is to have an space ship that brings all the goods and products produced by the water island to the upper community on the floating islands. Needs to be a closed transport ship, because the weather conditions are changing and the goods shouldn't get destroyed.

<https://3dexport.com/3dmodel-star-wars-transporter-atmospheric-assault-lander-121624.htm>

CONCEPT - GOODS, PRODUCTS



<https://www.artstation.com/artwork/VgkoI4>



<https://www.artstation.com/artwork/VgkoI4>



<https://www.artstation.com/artwork/VgkoI4>



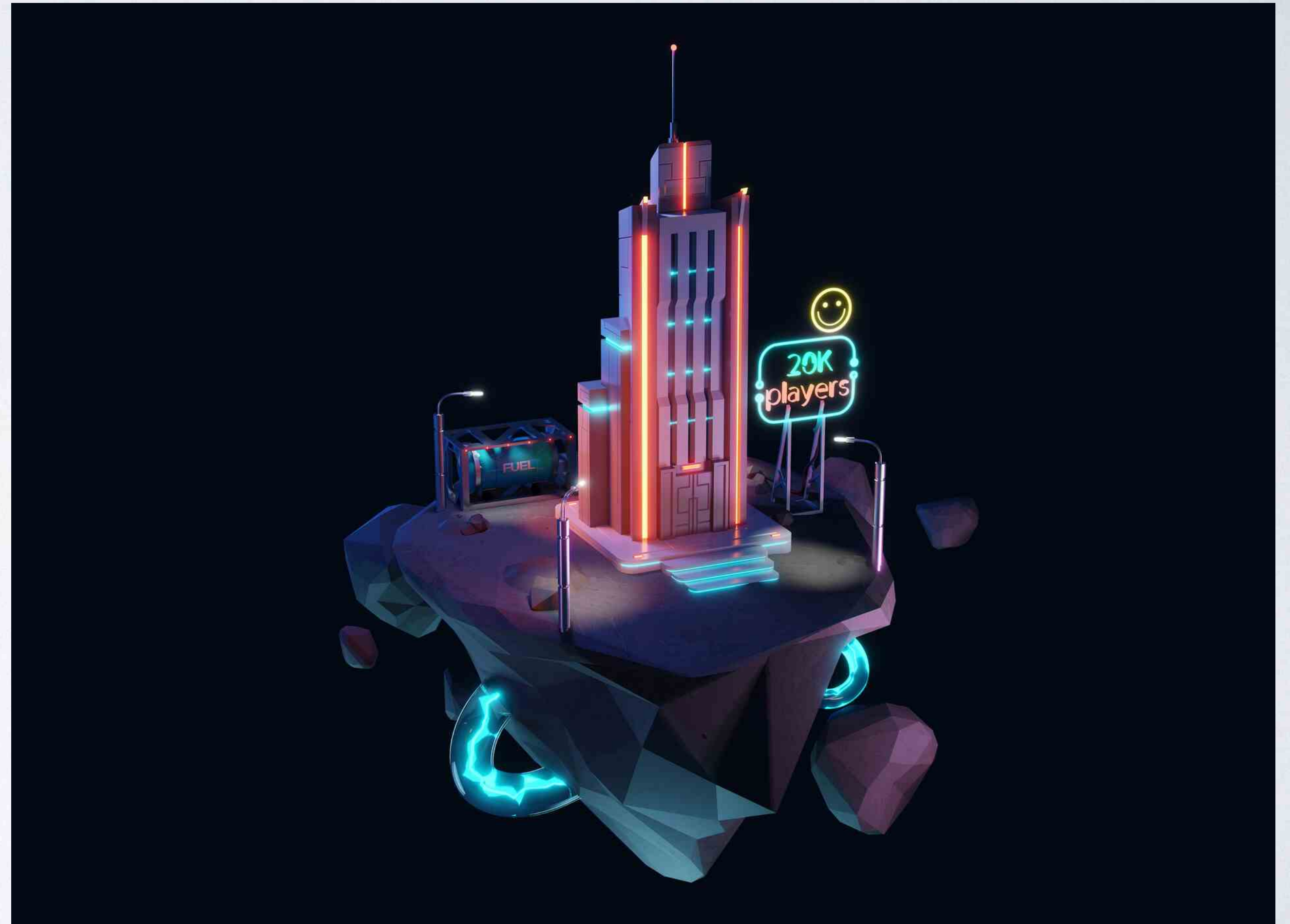
<https://www.artstation.com/artwork/9mWbbL>

Goods like food, drinks and other products that are grown, produced and manufactured on earth.



CONCEPT - SKY ISLANDS

Futuristic cities build on islands where the upper class lives. Architecture is very advanced and sustainable and each island produces its own energy with alien technology.



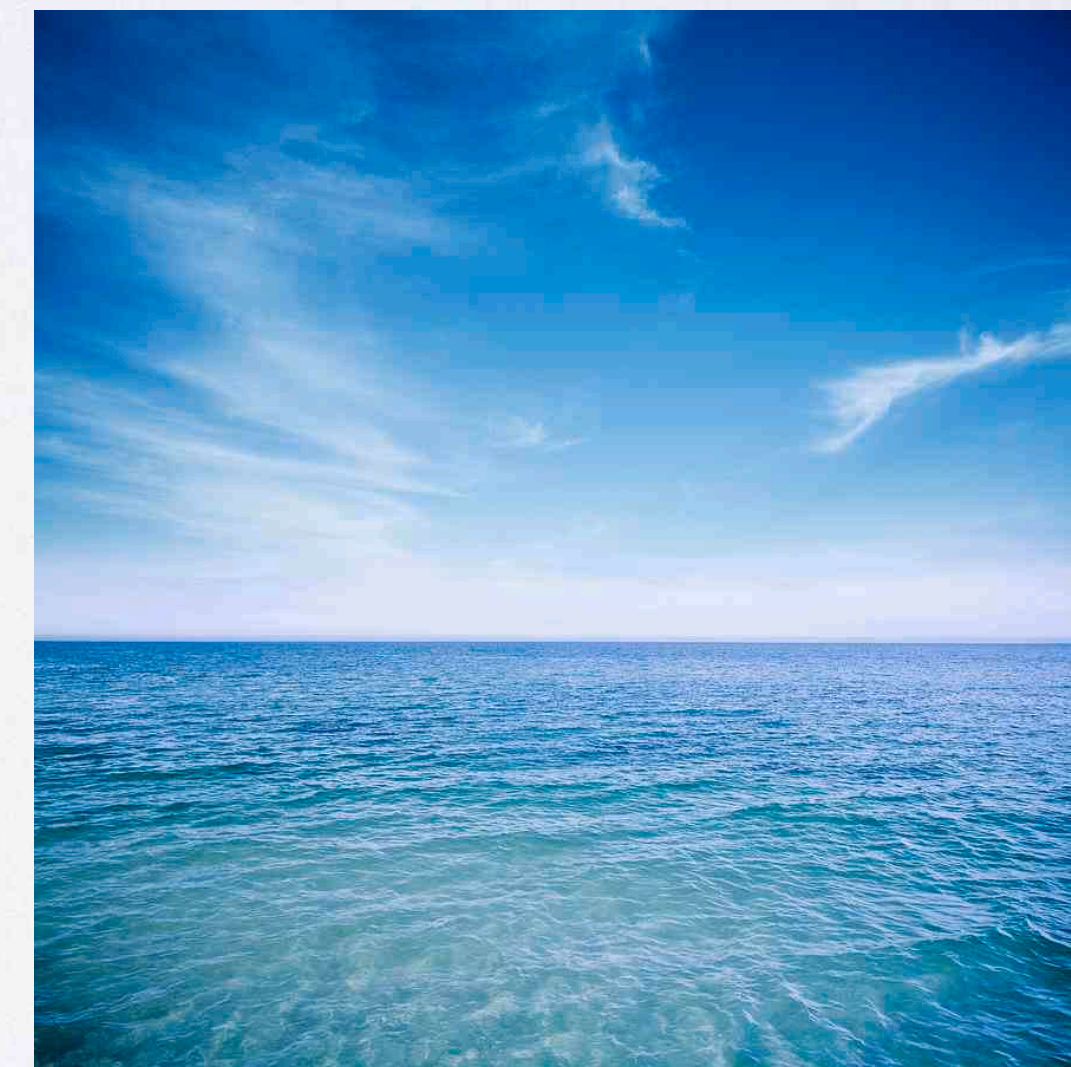
<https://www.artstation.com/artwork/03rwBw>

CONCEPT - WEATHER SCENARIOS



<https://www.timeforkids.com/g56/what-are-storms-2/>

The weather is changing every 15min what makes living very uncomfortable but plants can grow very fast on earth.



<https://photos.com/featured/sunny-ocean-aaron-foster.html>

CONCEPT: AUGMENTED REALITY SKY EFFECT



Here I found some examples of a AR apps that are showing how it looks in 8th wall.

PROJECT OF SKY EFFECT - UNFINISHED



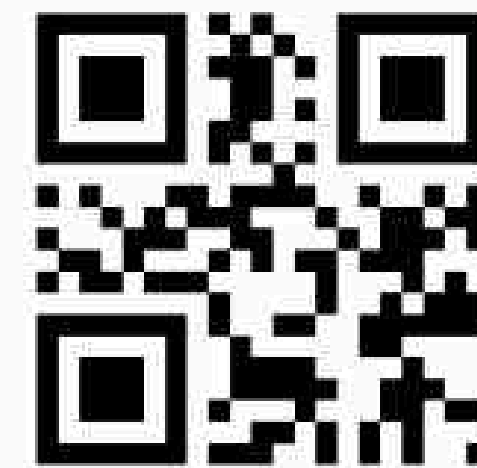
8th.io/eg7mp

Visit URL
8th.io/eg7mp
on a phone or
tablet



OR

1. Open Camera
2. Scan Code



AR View 

<https://marybunch.8thwall.app/dschoernig-a2-ar-project/>

CREDITS

Basic 3D models from sketchfab.com but remodelled for the project and optimised for 8th wall

- <https://sketchfab.com/3d-models/transport-spaceship-34308c43a74d42b19ed680006c44f676>
- <https://sketchfab.com/3d-models/shipping-containers-cc3f7136710f4905905eae1d10ac50b7>
- <https://sketchfab.com/3d-models/a3an-safebox1-e7d8ea715ec4473f94911be130692782>
- <https://sketchfab.com/3d-models/foxs-islands-163b68e09fcc47618450150be7785907>